

# LM-SLIM LINE HIGH BAY

Highest LPW – Lowest Profile

The LM-Slim Line High Bay is the most innovative slim line high bay on the market.

The simple uni-body design offers the narrowest and shallowest housing in class. Designed with the contractor in mind, the SLHB is simple to install for both surface mount and with aircraft hangers. The polycarbonate body and lens provide for an attractive, yet durable luminaire for even the most challenging of environments. Hanging cables and power whip included.



Legacy DLC 5.0 Listings  
Dimming Products = DLC Premium  
Non Dimming Products = DLC Standard  
DLC 5.1 - Premium

Stocked Models	0-10VDC Dimming	Watts - 277V	Rating	Lumens
LM-SLHB496-F-5000K-CM	NO	94	DAMP	14,347
LM-SLHB4144-F-5000K-CM	NO	140	DAMP	21,325
LM-SLHB4192-C-5000K-CM	NO	191	DAMP	31,229
LM-SLHB496-DIM-F-5000K-CM	YES	94	DAMP	14,347
LM-SLHB4144-DIM-F-5000K-CM	YES	140	DAMP	21,325
LM-SLHB4192-DIM-C-5000K-CM	YES	191	DAMP	31,229
Special Order Models	0-10VDC Dimming	Watts - 277V	Rating	Lumens
LM-SLHB496-F-5000K-NL	NO	94	WET - WASHDOWN	14,347
LM-SLHB4144-F-5000K-NL	NO	140	WET - WASHDOWN	21,325
LM-SLHB4192-C-5000K-NL	NO	191	WET - WASHDOWN	31,229
LM-SLHB496-DIM-F-5000K-NL	YES	94	WET - WASHDOWN	14,347
LM-SLHB4144-DIM-F-5000K-NL	YES	140	WET - WASHDOWN	21,325
LM-SLHB4192-DIM-C-5000K-NL	YES	191	WET - WASHDOWN	31,229

## FOR COMMERCIAL AND INDUSTRIAL APPLICATIONS

### Suffix Options:

**NL** - IP66 Rated  
**CM** - Center Mount Whip  
**DIM** = 0-10VDC Dimming  
**BRAS** - Integrated Network Lighting Control (LMIC)  
**MS** - Integrated Motion Sensor  
**F** - Frosted Lens  
**C** - Clear Lens

### Dimension & Weight:

Size: 4' – 45.25 (L) 5.75 (W) 2.75 (H) 5.2 lbs.

**Construction:** Polycarbonate Body and Lens

### Environment:

Indoor/Outdoor Use – Damp (IP51) or Wet (IP66)

**Kelvin:** 5000K (Special Order - 2700, 3500 & 4000K)

**CRI:** Greater than 80

**Special Order** - 6 Week Lead Time

**Operating Temperature:** -20 to 50°C (-4 to 122°F)

**Rated Life @ 55°C:** >65,000 hours

**Lumen Maintenance @ 55°C:** 98.89%

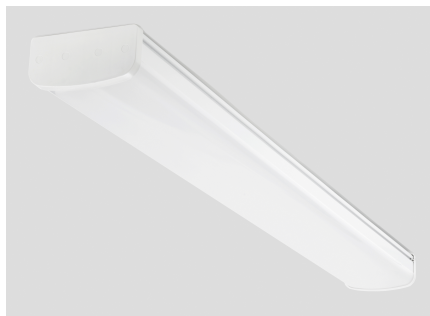
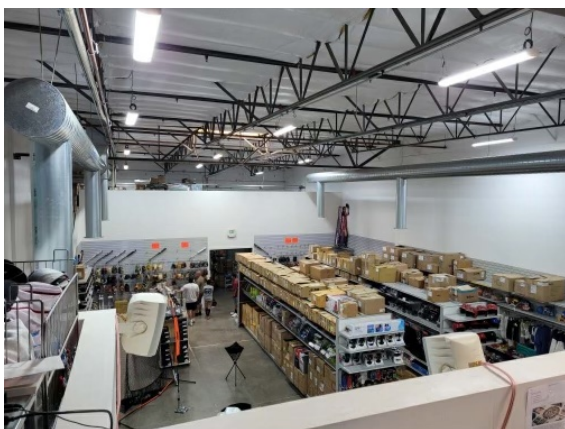
**THD:** <15%

**Input Voltage:** 120 - 277VAC

**Power Factor:** >0.9

**Beam Angle:** 120°

**Warranty:** 7 Years



### Suggested Replacement Options

250W - 400W MH  
T5 - 4 Lamp - SLHB496  
T8 - 6 Lamp

400W MH  
T5 - 6 Lamp - SLHB4144  
T8 - 8 Lamp

750W - 1000W MH  
T5 - 8 - 10 LAMP - SLHB4192

**LEDSTICK**  
COMPANY  
**(888) 927-4LED**  
[www.ledstick.net](http://www.ledstick.net)

### 7 Year Non-Prorated Warranty

LED Stick Company recommends Transient Voltage Surge Suppression (TVSS) on circuits controlling LED lighting. If a warranty claim exceeds 0.5% of installed lights and the lights are not protected by a TVSS, the warranty may be voided, resulting in denied claims. Always check for an Open Neutral Voltage and current on the neutral is dangerous and can cause LED failure and void the warranty.



L.M products worldwide are manufactured by Hangzhou LMenegysolution Company, Ltd.

8-25-2023